



# Studio and Production Space for Film & TV, Content Creation, Photography and Set build.

22 Farnell Street  
Glasgow G4 9SE

Production Space Brochure  
August 2023 © Agile City



# Welcome to Glue Factory

Built in 1891, the building is defined by its rich history and raw beauty. Boasting original glue vats and industrial pipework from its previous use by Scottish Adhesives (hence 'Glue Factory'), the space is a dynamic and unique location for industrious people with ambitious projects.

At over 20000ft<sup>2</sup> (2000m<sup>2</sup>) – split across two floors of traditional Warehouse space, white walled Galleries, a double height 'Tank Room' and the recent addition of Glasgow's largest inner-city, acoustically treated green screen and edit suite – there are few locations so close to the city centre with the same scale and variety of space.

The space is suited to:

- Film makers: music promotion, videos, commercials, TV and feature films
- Content creators: online, animation, moving image, green screen
- Photographers: commercial, editorial, fashion and music
- Production companies: looking for temporary space for workshops, rehearsals, and set build.



# Production Space

## Galleries

Three interconnected spaces, light filled with exposed material finishes.

- 3520ft<sup>2</sup>
- Capacity 100
- Street level access, via ramp
- Door width 1.4m








| PROJECT GALLERY |                  |                      |
|-----------------|------------------|----------------------|
| Area            | 49m <sup>2</sup> | 527sqft <sup>2</sup> |
| Width           | 5.3m             |                      |
| Length          | 9.1m             |                      |
| Height          | Low 3.3m         | High 6.0m            |

| GALLERY 2 |                   |                       |
|-----------|-------------------|-----------------------|
| Area      | 139m <sup>2</sup> | 1496sqft <sup>2</sup> |
| Width     | 8.8m              |                       |
| Length    | 16.1m             |                       |
| Height    | Low 3.3m          | High 6.0m             |



Main entrance / exit  
Accessible entrance with ramp

| Gallery 1 |                   |                       |
|-----------|-------------------|-----------------------|
| Area      | 139m <sup>2</sup> | 1496sqft <sup>2</sup> |
| Width     | 8.8m              |                       |
| Length    | 16.1m             |                       |
| Height    | Low 3.3m          | High 6.0m             |

Hire area 

Skylight 

Scale 1:300 at A4

0  2m

↓ North



## GALLERIES – 3520ft<sup>2</sup>

[Enquire about Galleries →](#)

| SUITABLE FOR            | CAPACITY                               | ACCESSIBILITY                               | POWER SUPPLY                      |
|-------------------------|--|---|-----------------------------------|
| Film & TV production    | 100                                    | Step free access                            | 32 Amp 3 phase                    |
| Photography             |  | No accessible toilet                        | 13 Amp sockets                    |
| Online content creation |  | On street access, via ramp. Door width 1.4m |                                   |
| DIMENSIONS              |  | FACILITIES                                  |                                   |
| Area                    | 327m <sup>2</sup>                      | 3520ft <sup>2</sup>                         | Cold water safe to drink          |
| Length                  | 16.0m                                  |   | No heating or hot water           |
| Width                   | 8.5m                                   |   | No Wi-Fi (4G/5G on some networks) |
| High                    | 6m                                     |   |                                   |
| Low                     | 3.3m                                   |   |                                   |
| INTERIOR FINISH         |  |   |                                   |
| Ceiling                 | Pitched, timber boards, apex frame     |   |                                   |
| Floor                   | Wood timber, metal sheets, grey        |   |                                   |
| Lighting                | Fluorescent tubes, LED battens         |   |                                   |
| Walls                   | Brick, MDF stud & plaster walls, white |   |                                   |
| Windows                 | Skylights (no black out blinds)        |   |                                   |



# Green Screen Studios





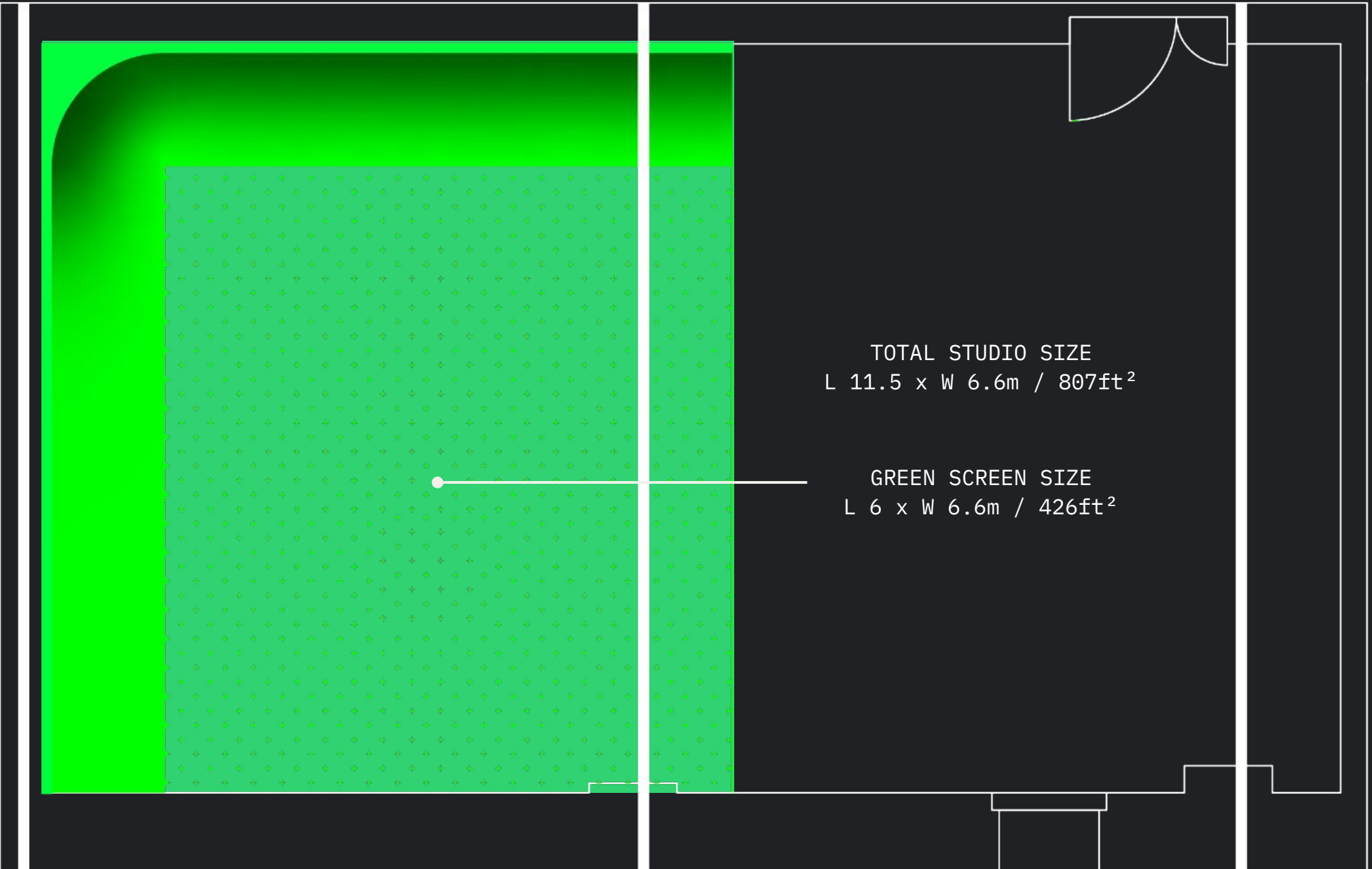
## Green Screen (coming soon)

Glue Factory hosts the largest inner-city green screen facility in Glasgow.

The Green Screen is managed in collaboration with Too Happy Studios, run by Artist Rachel Maclean.

- 800ft<sup>2</sup>
- Capacity 40
- Street level access, via ramp
- Door width 1.4m
- Two-sided 1m radius curve
- Pre-rigged lighting
- Access to production suite with kitchen, dressing room, hair and makeup area, break out space
- Access to Post / Edit suite for editing and live playback.








|                               |
|-------------------------------|
| PRODUCTION SUITE              |
| Private Kitchen               |
| Wardrobe and hair/makeup area |
| Post / Edit Suite             |

FARNELL STREET

| GREEN SCREEN |            |                    |
|--------------|------------|--------------------|
| Studio Area  | 6m x 11.5m | 807ft <sup>2</sup> |
| Cove Area    |            | 426ft <sup>2</sup> |
| Length       | 6.6m       | 21ft               |
| Width        | 6m         | 20ft               |
| Height       | Low 3.4m   | High 5.8m          |

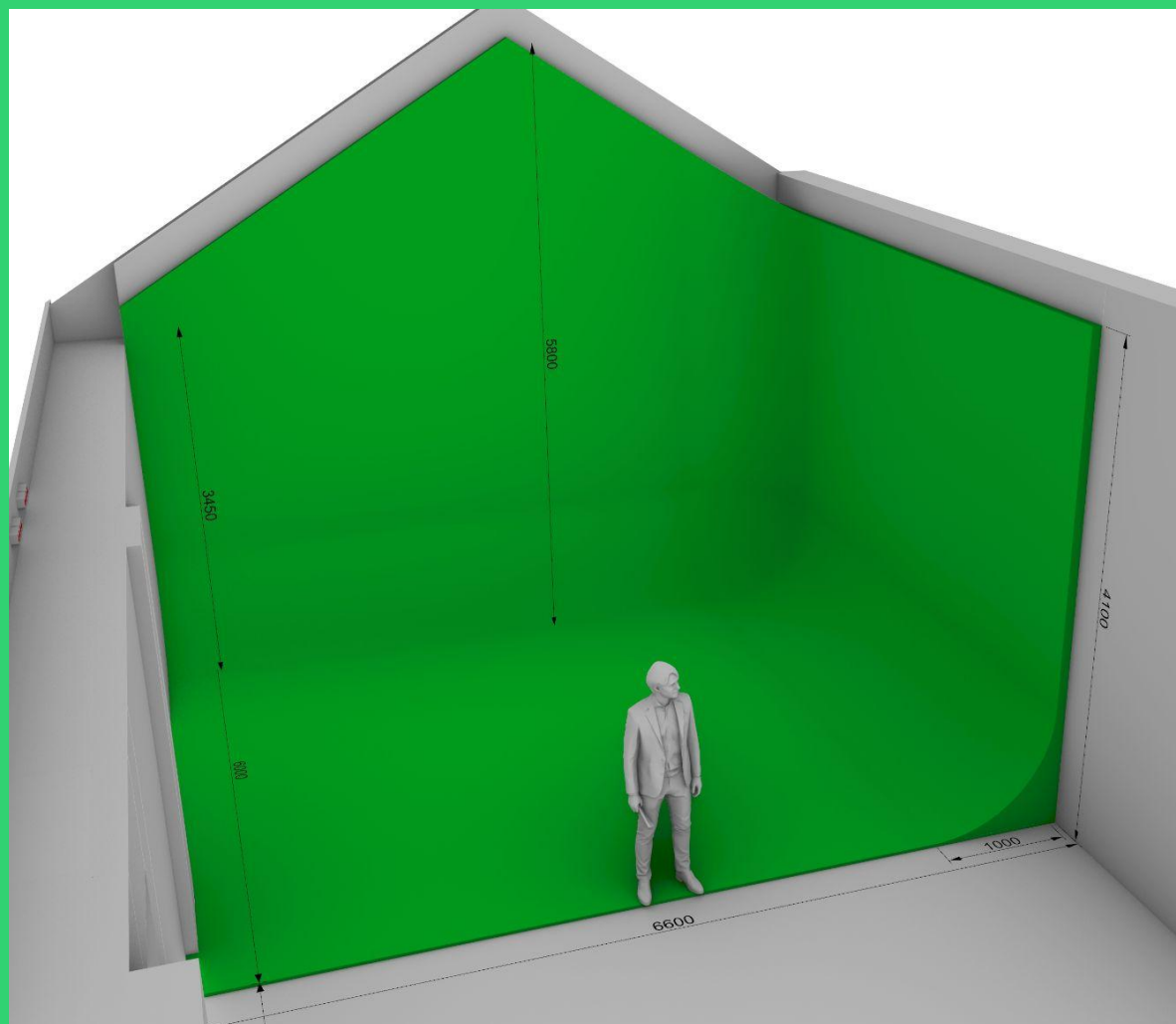
Hire area 

Skylight 

Scale 1:300 at A4

0  2m

↓ North



## GREEN SCREEN STUDIO – 800ft<sup>2</sup>

[Enquire about Green Screen →](#)

### SUITABLE FOR

Film & TV / Online Content

Animation

Photography

### ACCESSIBILITY

Step free access

No accessible toilet

Street access via ramp entrance. Door width 1.4m

### INTERIOR FINISH

Ceiling: Pitched, timber boards

Floor: Floating timber

### GREEN SCREEN FACILITIES

Capacity 40

Acoustic blackout curtains

Two wall 1m radius cove, painted Roscoe Chroma key green

Pre-rigged lights x 4: Aputure Nova P300C  
Floor lights x 2: Aputure Nova P300C

2.7m Colorama for photography

Green screen treadmill available for hire

### POWER SUPPLY

63A single phase

32A single phase

16A single phase (x2)

13A double sockets

### UTILITIES

IR heating panels

High speed Wi-Fi (120Mbps)

### DIMENSIONS

Total studio size

L 11.5m x W 6.6m

807ft<sup>2</sup>

Green Screen size

L 6m x W 6.6m

426ft<sup>2</sup>

Ceiling height (max)

5.8m

Ceiling height (min)

3.4m

### PRODUCTION SUITE

Post / Edit suite

### POST / EDIT SUITE SPEC

Private kitchen

Wardrobe and hair/makeup area

- Hi spec gaming PC with RTX3090 GPU
- Large 65" screen for playback
- 1x BenQ 4K 27" UHD calibrated monitor, 2x Dell 27"QHD monitors
- 2 PreSonus 4.5" powered audio monitors
- High speed wired internet (120Mbps)
- Backup solutions via Dropbox (cloud) and NAS (local)
- 2m custom sit/stand desk
- Full Adobe Creative suite, Avid, Cinema 4D, Red Giant

*(Additional software available on request)*

## Warehouse & Annexe

Robust and flexible space in close proximity to roller shutter entrance for ease of access.

The space is adjacent to Machine Room and Tank Room – and can be used holistically for larger productions, storage, and set build.

- 2730ft<sup>2</sup>
- Capacity 100
- Street level access, via roller shutter entrance
- Door width 2m



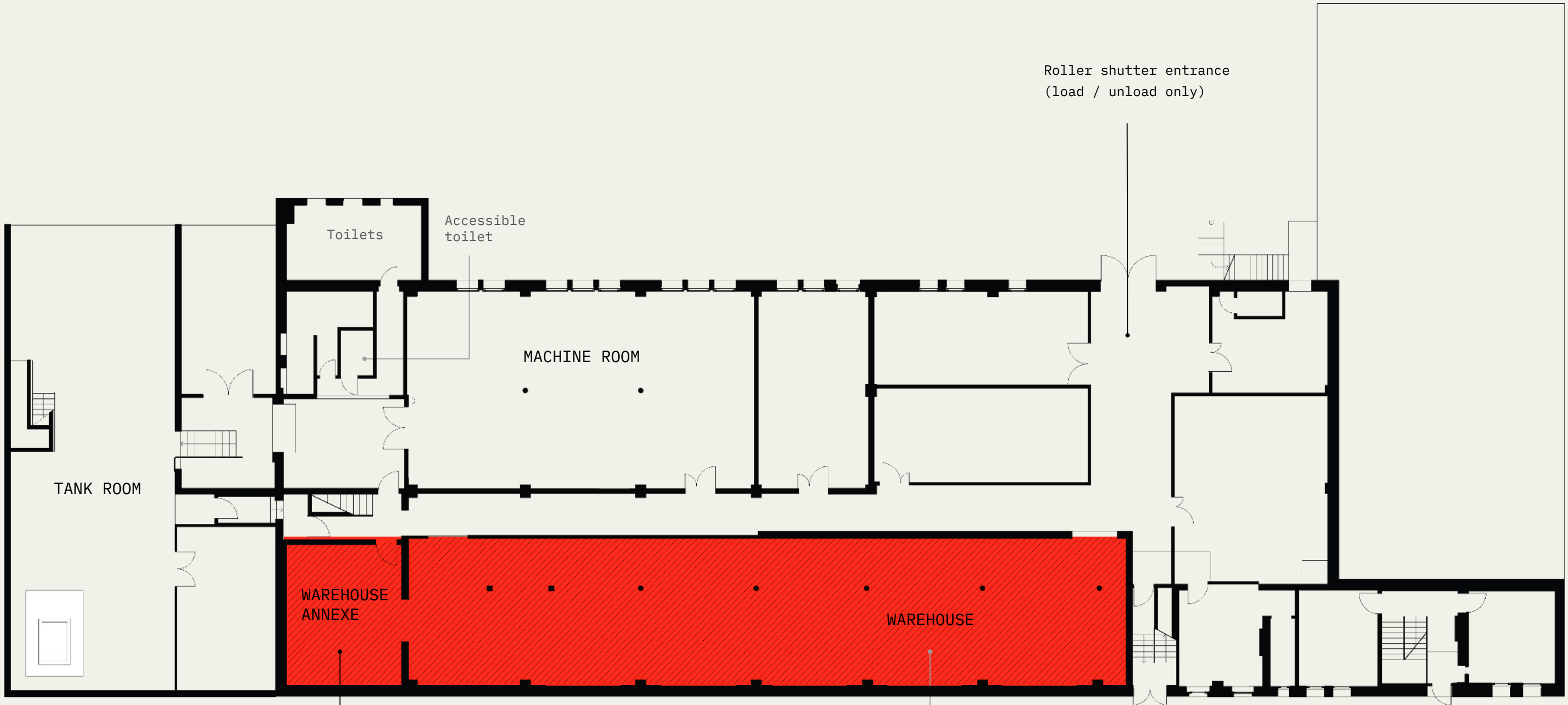


Warehouse at Glue Factory



Warehouse Annex at Glue Factory







Roller shutter entrance  
(load / unload only)

| WAREHOUSE ANNEXE |                    |                      |
|------------------|--------------------|----------------------|
| Area             | 36.4m <sup>2</sup> | 392sqft <sup>2</sup> |
| Width            | 6.5m               |                      |
| Length           | 5.3m               |                      |
| Height           | 3.6m               |                      |

| WAREHOUSE |                   |                       |
|-----------|-------------------|-----------------------|
| Area      | 253m <sup>2</sup> | 2723sqft <sup>2</sup> |
| Width     | 6.5m              |                       |
| Length    | 33.2m             |                       |
| Height    | 3.6m              |                       |

Hire area 

Skylight 

Scale 1:300 at A4

0  2m

↓ North



## WAREHOUSE & ANNEXE – 2730ft<sup>2</sup>

[Enquire about Warehouse →](#)

| SUITABLE FOR            | CAPACITY                                      | ACCESSIBILITY                          | POWER SUPPLY                      |
|-------------------------|---|--|-----------------------------------|
| Film & TV production    | 100   | Step free access                       | 32 Amp 3 phase                    |
| Photography             |   | Accessible toilet                      | 13 Amp sockets                    |
| Online content creation |   | Roller shutter entrance. Door Width 2m |                                   |
| DIMENSIONS              |   | FACILITIES                             |                                   |
| Area                    | 253m <sup>2</sup>                             | 2732ft <sup>2</sup>                    | Cold water safe to drink          |
| Length                  | 38.6m   |  | No heating or hot water           |
| Width                   | 6.6m  |  | No Wi-Fi (4G/5G on some networks) |
| High                    | 3.6m  |  |                                   |
| Low                     | 3.6m  |  |                                   |
| INTERIOR FINISH         |   |  |                                   |
| Ceiling                 | Exposed timber joists, dark brown             |  |                                   |
| Floor                   | Painted concrete                              |  |                                   |
| Lighting                | LED battens                                   |  |                                   |
| Walls                   | White painted brick, exposed grey breezeblock |  |                                   |
| Windows                 | No external light source, full light control  |  |                                   |

## Machine Room

Robust and flexible, with close proximity to the ground floor roller shutter for ease of access.

The space is adjacent to Warehouse and Tank Room and can be used holistically for larger productions, storage, set build and as a unit base.

- 1570ft<sup>2</sup>
- Capacity 100
- Street level access, via roller shutter entrance
- Door width 2m



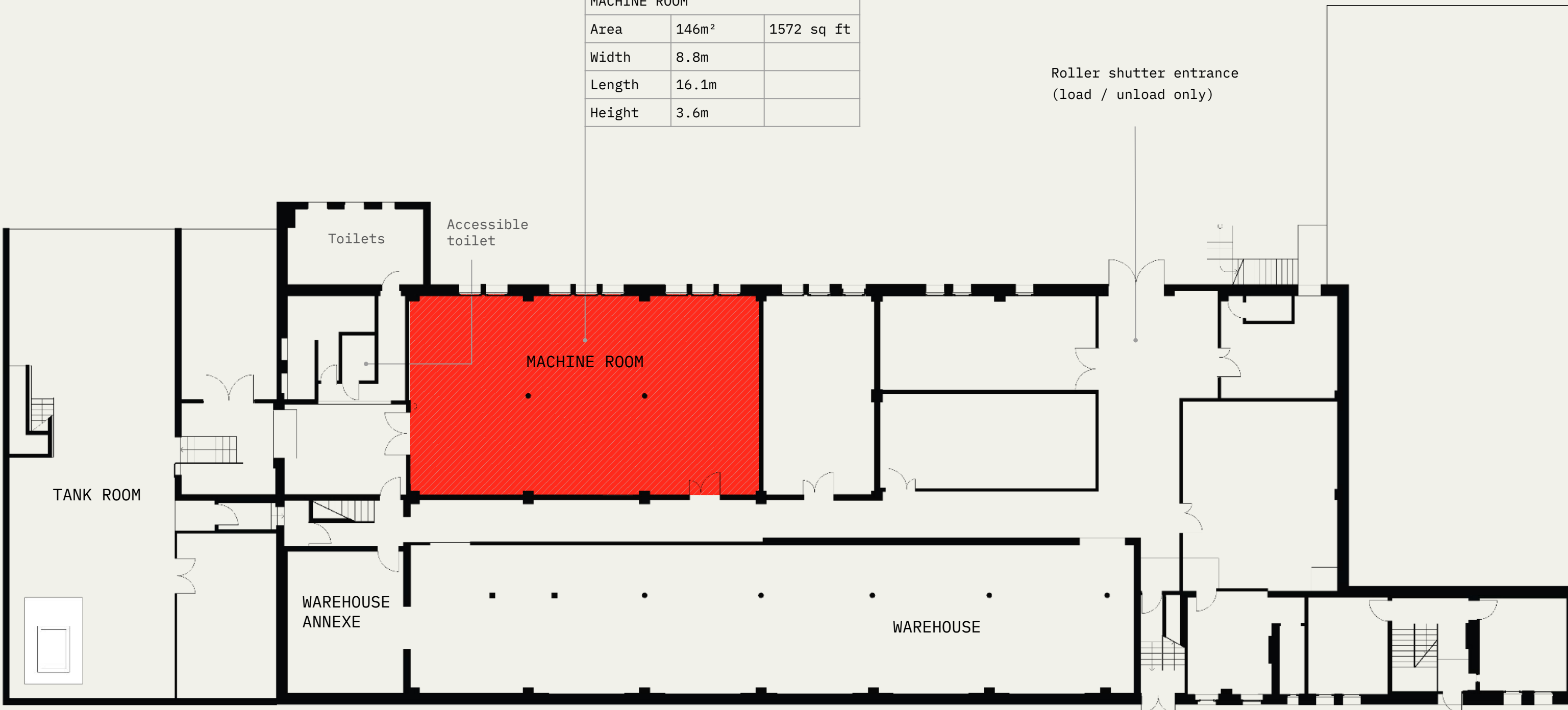


Machine Room at Glue Factory

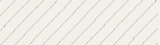


Machine Room at Glue Factory

| MACHINE ROOM |                   |            |
|--------------|-------------------|------------|
| Area         | 146m <sup>2</sup> | 1572 sq ft |
| Width        | 8.8m              |            |
| Length       | 16.1m             |            |
| Height       | 3.6m              |            |



Roller shutter entrance  
(load / unload only)

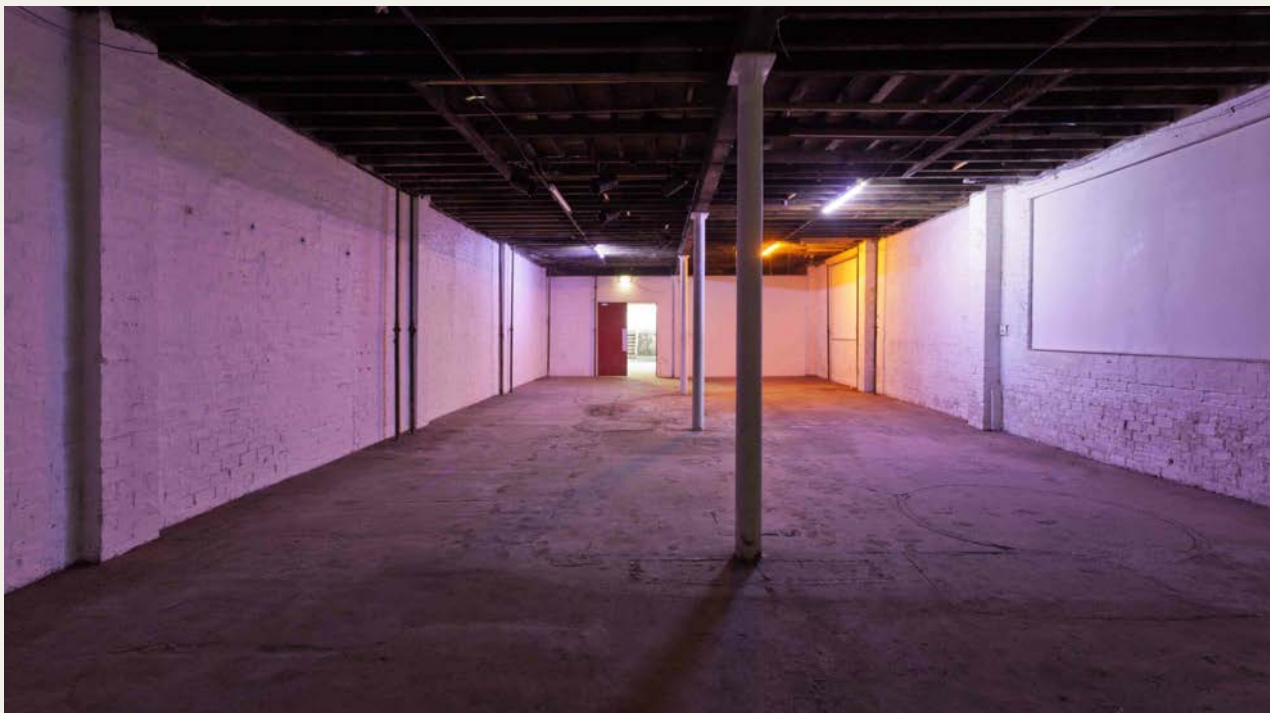
Hire area 

Skylight 

Scale 1:300 at A4

0  2m

↓ North



## MACHINE ROOM – 1570ft<sup>2</sup>

[Enquire about Machine Room →](#)

| SUITABLE FOR            | CAPACITY                                     | ACCESSIBILITY                          | POWER SUPPLY                      |
|-------------------------|--|--|-----------------------------------|
| Film & TV production    | 100  | Step free access                       | 32 Amp 3 phase                    |
| Photography             |  | Accessible toilet                      | 13 Amp sockets                    |
| Online content creation |  | Roller shutter entrance. Door width 2m |                                   |
| DIMENSIONS              |  | FACILITIES                             |                                   |
| Area                    | 146m <sup>2</sup>                            | 1572ft <sup>2</sup>                    | Cold water safe to drink          |
| Length                  | 16.1m  |  | No heating or hot water           |
| Width                   | 9.2m   |  | No Wi-Fi (4G/5G on some networks) |
| High                    | 3.6m   |  |                                   |
| Low                     | 3.6m   |  |                                   |
| INTERIOR FINISH         |  |  |                                   |
| Ceiling                 | Exposed timber joists, dark brown            |  |                                   |
| Floor                   | Painted concrete                             |  |                                   |
| Lighting                | Fluorescent tubes                            |  |                                   |
| Walls                   | White painted brick                          |  |                                   |
| Windows                 | No external light source, full light control |  |                                   |

## Tank Room

Striking double height space, split over two-levels, and celebrating the building's industrial past with glue tanks and pipework.

- 1700ft<sup>2</sup>
- Capacity 100
- No step free access







Tank Room at Glue Factory



Tank Room details at Glue Factory

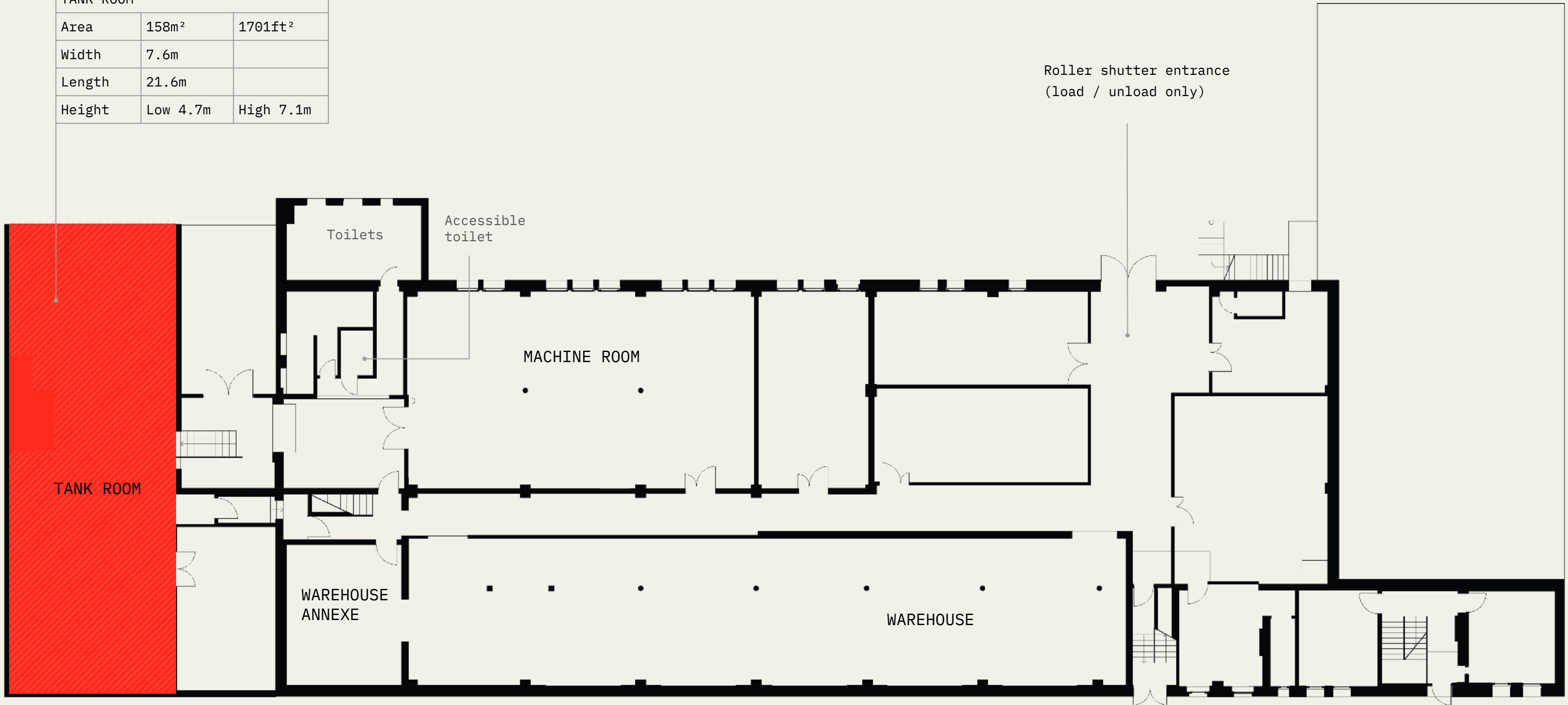



## TANK ROOM – 1700ft<sup>2</sup>

[Enquire about Tank Room →](#)

| SUITABLE FOR            | CAPACITY                                 | ACCESSIBILITY                          | POWER SUPPLY                                    |
|-------------------------|--|--|---|
| Film & TV production    | 100                                      | No step free access                    | No direct power supply                          |
| Photography             |  | No accessible toilet                   | 32A & 13A power can be run from adjacent spaces |
| Online content creation |  | Roller shutter entrance. Door width 2m |   |
| DIMENSIONS              |  | FACILITIES                             |   |
| Area                    | 158m <sup>2</sup>                        | 1700ft <sup>2</sup>                    | Cold water safe to drink                        |
| Length                  | 21.6m                                    |  | No heating or hot water                         |
| Width                   | 5.6m                                     |  | No Wi-Fi (4G/5G on some networks)               |
| High                    | 7.1m                                     |  |   |
| Low                     | 4.8m                                     |  |   |
| INTERIOR FINISH         |  |  |   |
| Ceiling                 | Exposed steel frame and composite panels |  |   |
| Floor                   | Concrete                                 |  |   |
| Lighting                | LED flood lights                         |  |   |
| Walls                   | Brock, breeze block, metal panels        |  |   |
| Windows                 | Skylights, (no blinds)                   |  |   |

| TANK ROOM |                   |                     |
|-----------|-------------------|---------------------|
| Area      | 158m <sup>2</sup> | 1701ft <sup>2</sup> |
| Width     | 7.6m              |                     |
| Length    | 21.6m             |                     |
| Height    | Low 4.7m          | High 7.1m           |



Hire area 

Skylight 

Scale 1:300 at A4

0  2m

↓ North



**Production Office &**  
**Flexible Desk Space**

## Flexible Desk/Office Space at Civic House

Production companies or individuals in need of Desk or Office space on shoot days, can hire space at our sibling building, Civic House, only 5 mins walk from Glue Factory.

*For individuals:*

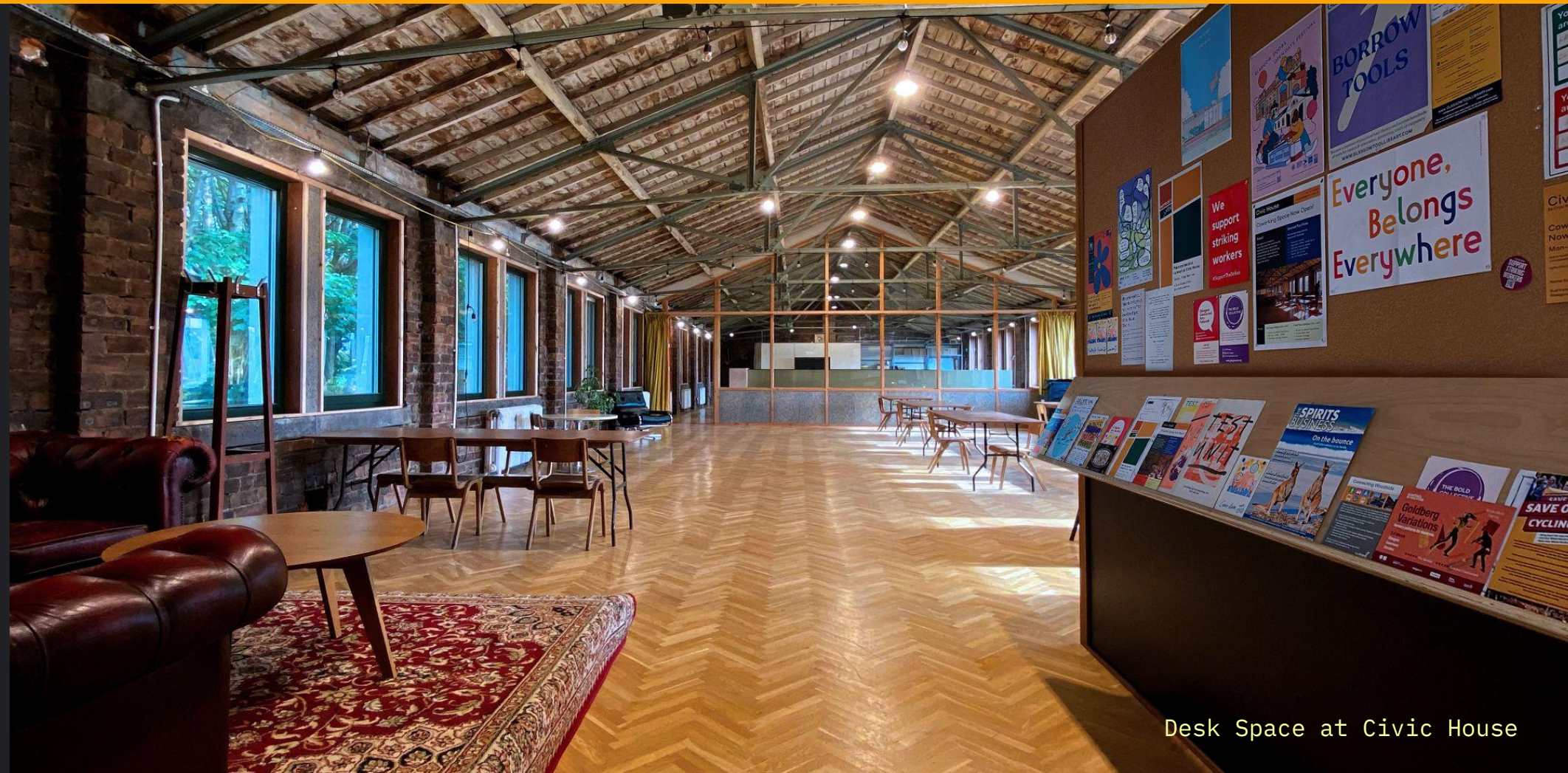
- **Hot Desk Day Pass**
- £20 pp per day, inc VAT
- Includes lunch at Parveen's
- Located on first floor

*For teams - upto 8ppl:*

- **Production Office**
- £160 per day, inc VAT
- Located on ground floor

Civic House Coworking studio, Canteen and Venue is home to a dynamic mix of organisations and individuals working in the fields of design, film, architecture, sustainability and social & cultural enterprise.

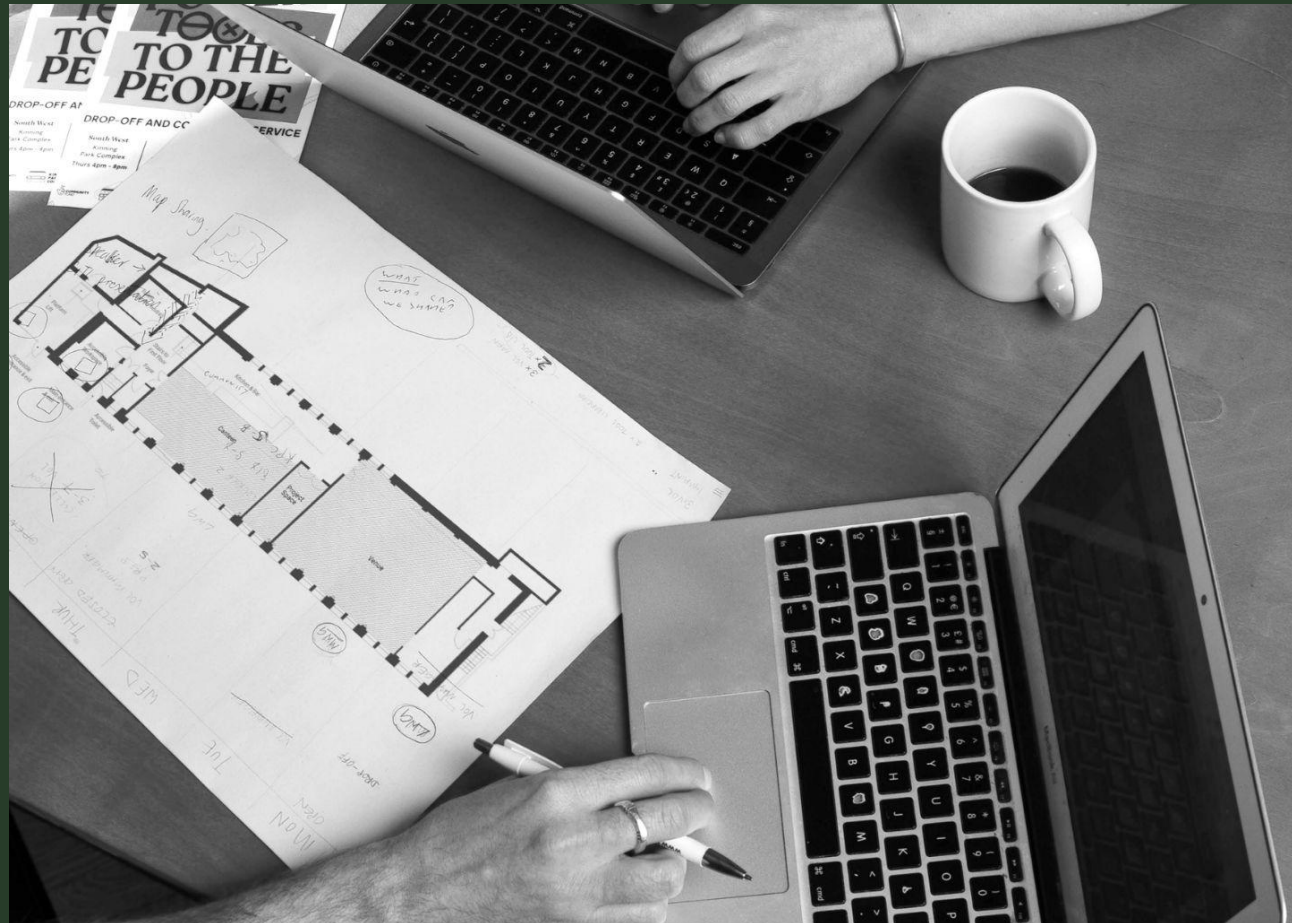
[Find out more about Civic House here →](#)



Desk Space at Civic House



Production Office at Civic House



**PRODUCTION OFFICE / DESK SPACE** [Enquire about desk/office space →](#)

| SUITABLE FOR   | ACCESSIBILITY        | FACILITIES   |
|----------------|----------------------|--|
| Film & TV      | Step free access     | Communal kitchen (first floor)<br>Parveen's canteen (ground floor) |
| Animation      | Accessible toilet    | High speed Wi-Fi (200Mbps)   |
| Photography    | Accessible workspace | Printer & photocopier  |
| Online content | Platform lift        | Shower & changing facilities                                       |

**INTERIOR FINISH**

|                 |   |  |
|-----------------|---|--|
| <i>Ceiling</i>  | Pitched timber boards, exposed steel frame and composite panels |  |
| <i>Floor</i>    | Oak Parquet (first floor)<br>Concrete (ground floor)            |  |
| <i>Lighting</i> | Mixed   |  |
| <i>Walls</i>    | Exposed brick, exposed wood frame, glass, composite panels,     |  |
| <i>Windows</i>  | Dual aspect, triple glazed                                      |  |

**POWER SUPPLY**

|                    |  |  |
|--------------------|--|--|
| 32A single phase   |  |  |
| 13A double sockets |  |  |

parveen's

پرویز

**Pakistani inspired canteen  
at Civic House**

Open Tuesday – Friday, 9am - 4pm  
Lunch served from 12pm

Civic House, 26 Civic Street, G4 9RH  
5 min walk from Glue Factory





The canteen at Civic House builds community through food - encouraging people to eat healthy and honest meals at shared tables.

The ethos is structured around a simple operating model: to cook and serve one meal a day that everyone can eat.

[Find out more about Civic House here](#) →



Civic House from Civic Street

## Parveen's Canteen

Serving up nourishing, affordable meals for anyone working at or visiting Civic House, 10am - 4pm Tuesday - Friday.

**All food is free from animal products**

### **Pricing:**

→ Bowls from £6.50

→ Sides, desserts from £2.50

[Find out more about Parveen's here](#) →



Canteen at Civic House

A man wearing a dark cap and a dark shirt is operating a camera mounted on a complex rig. The scene is dimly lit with a strong blue light source from the left, creating a high-contrast, industrial atmosphere. The man is focused on his work, and the rig includes various cables and mechanical components. The background shows a white wall and some dark machinery.

# Glue Factory in Action

Machine Room at Glue Factory  
Photo: Kal Visuals



Tank Room at Glue Factory  
Photo: Call of Duty - Lewis Capaldi



Galleries at Glue Factory  
Photo: Royal Conservatoire Scotland  
BA - Filmmaking



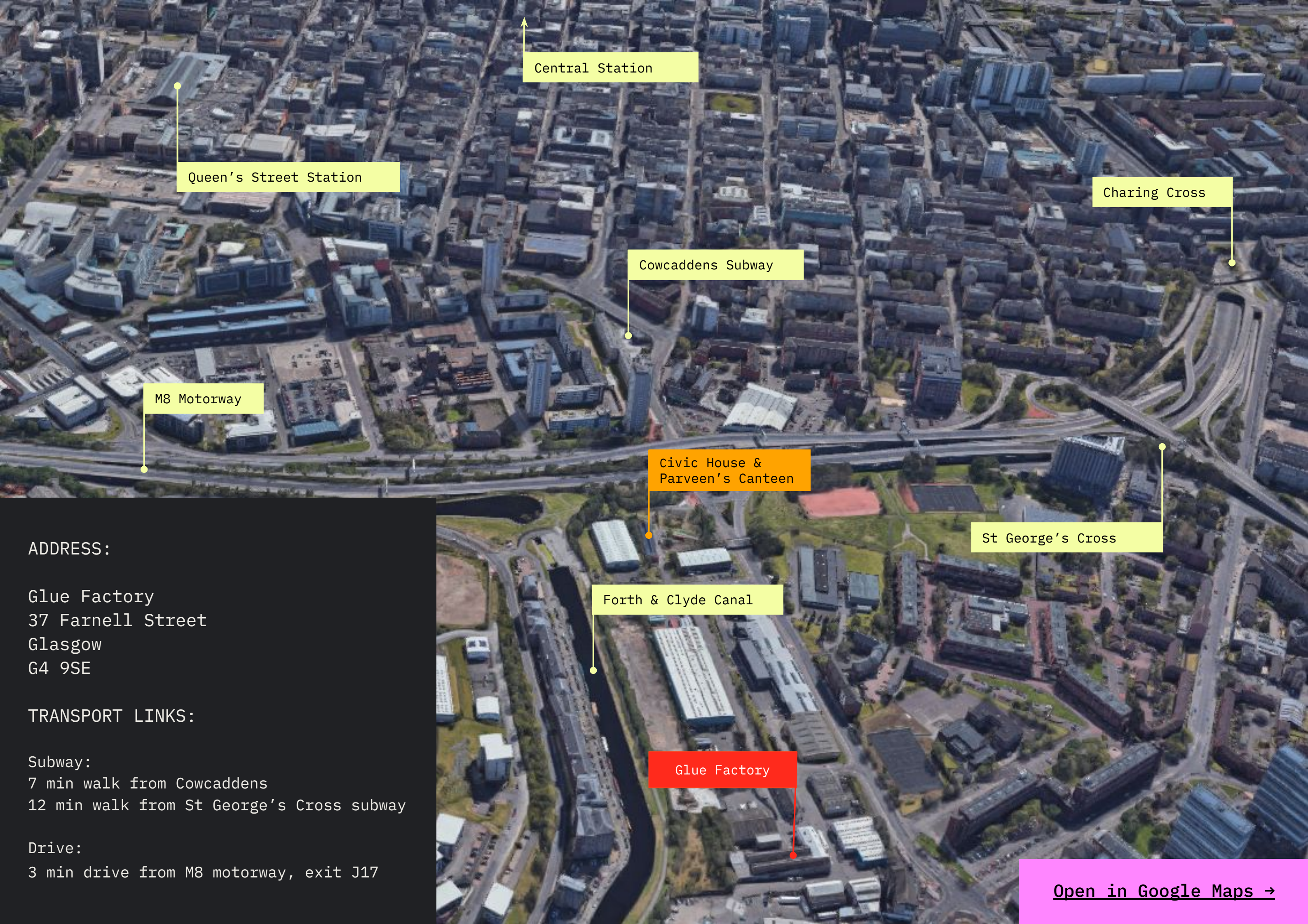
Green Screen at Glue Factory  
Photo: Too Happy LTD



Warehouse at Glue Factory  
GSA MFA, 2016  
Photo: McAteer

**With thanks to our clients  
& collaborators:**

BBC Scotland  
BBC Children's Production Ltd  
Beezr  
Caledonia TV  
Call of Duty: Playstation  
Climate Action Network Europe  
Commonwealth Theatre  
Creative Location  
Double or Nothing Productions  
Forest of Black  
Glasgow Life  
Glasgow Live Productions  
Glasgow School Of Art  
Humble Film Productions  
IWC Media  
LBP Outlander 5 Limited  
Nathan Shepka Productions  
Nextbike UK Ltd  
Reverie Films  
Royal Conservatoire of Scotland  
Screen Scotland  
Scottish Ensemble  
Sgeul Media Limited  
Studio Yes LTD  
STV



Queen's Street Station

Central Station

Charing Cross

Cowcaddens Subway

M8 Motorway

Civic House &  
Parveen's Canteen

St George's Cross

Forth & Clyde Canal

Glue Factory

ADDRESS:

Glue Factory  
37 Farnell Street  
Glasgow  
G4 9SE

TRANSPORT LINKS:

Subway:  
7 min walk from Cowcaddens  
12 min walk from St George's Cross subway

Drive:  
3 min drive from M8 motorway, exit J17

[Open in Google Maps →](#)



# Contact

## Hire Space

You can view all spaces and submit an enquiry via the website:

[Hire Space](#) →

For general enquiries or to arrange a viewing email Grace:

→ [hires@agile-city.com](mailto: hires@agile-city.com)

For Too Happy Studios' Green Screen & Production Suite:

→ [contact@toohappystudios.com](mailto: contact@toohappystudios.com)

## Thank you

Web: [agile-city.com](http:// agile-city.com) →

Instagram: [gluefactory](#) →

